



Fire Station 82 Update

January 21, 2025

Presentation By: Andrew MacDonald

Consultant Project Manager

Current Project Status

- Design authorized March 2022 (Res. 22-057)
- Public Input August 2022
- “State of Readiness”; Design Complete



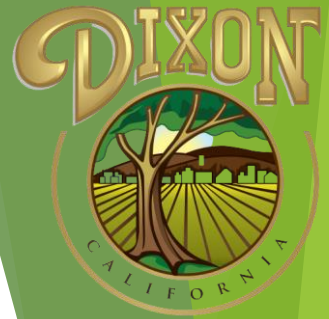
Costs and Financial Impact

- Construction Costs Estimated to be \$9.2M
- An additional \$600,000 is anticipated for:
 - Procurement
 - Construction Management and Inspection
 - Furniture, Equipment, Appliances
- Funds for Procurement and Construction have not been budgeted
 - \$3.3M in Fire Impact Fees



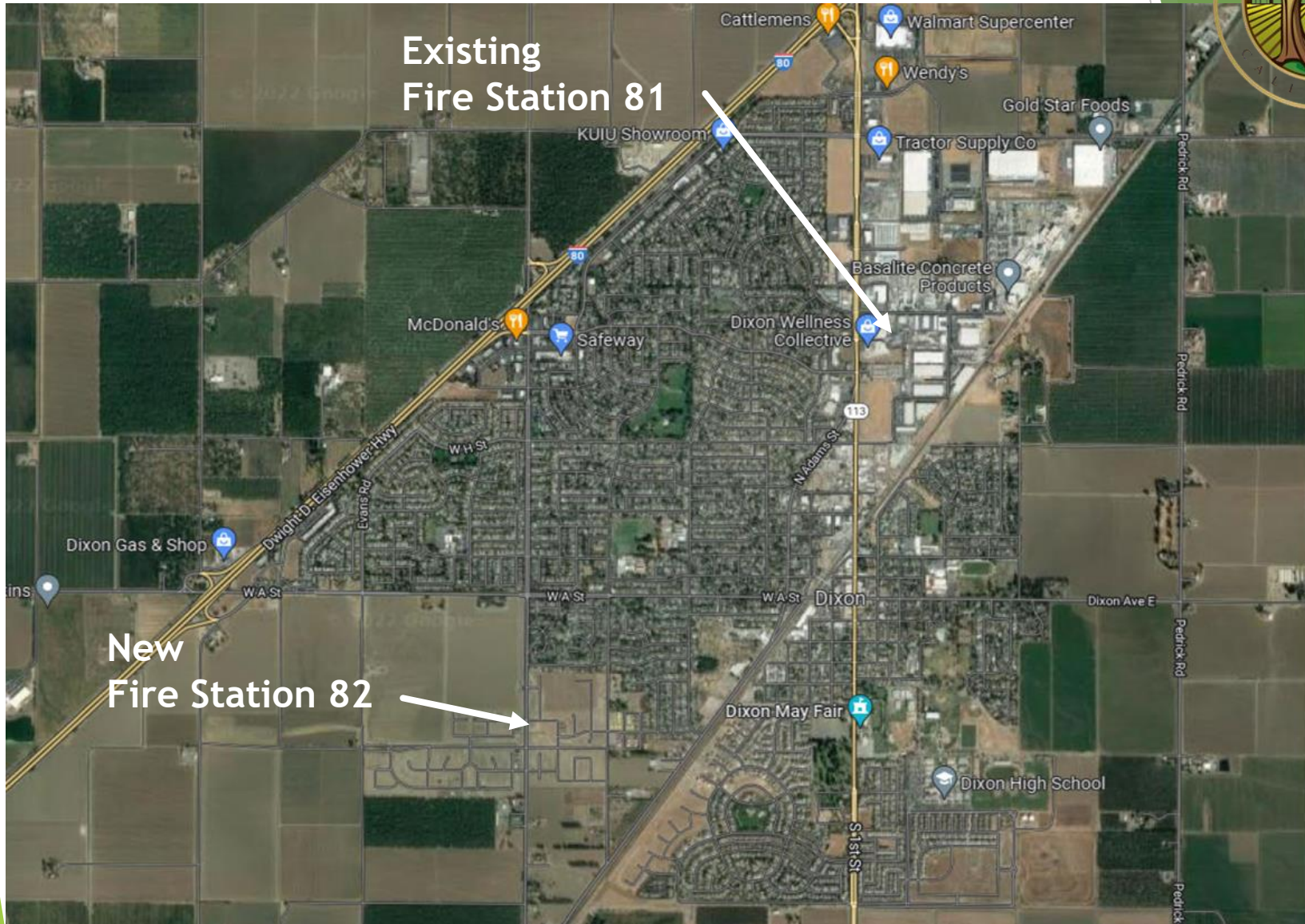
Key Features

- Location: Homestead
- 0.73 Acre Site with secure parking, guest parking
- 5-bay design for 4 pieces of equipment
- Pull-through Return from Lavender Lane
- Response to Pitt School Road
- 4 dorm rooms
- Gear Storage and Laundry
- Kitchen/Day Room, Patio Area
- Fitness and Fitness Patio Area
- Lobby and Office Space
- 8,200 square feet total

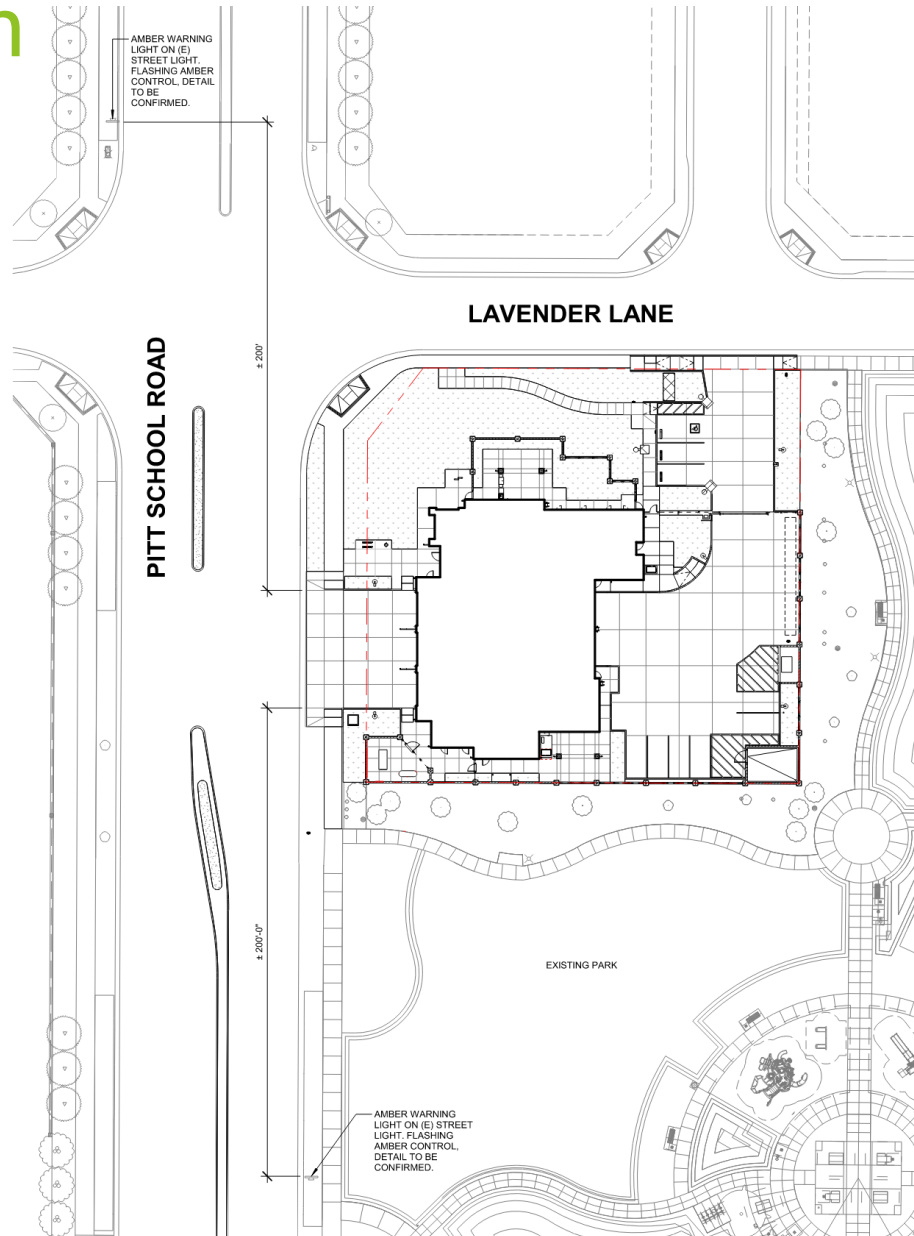




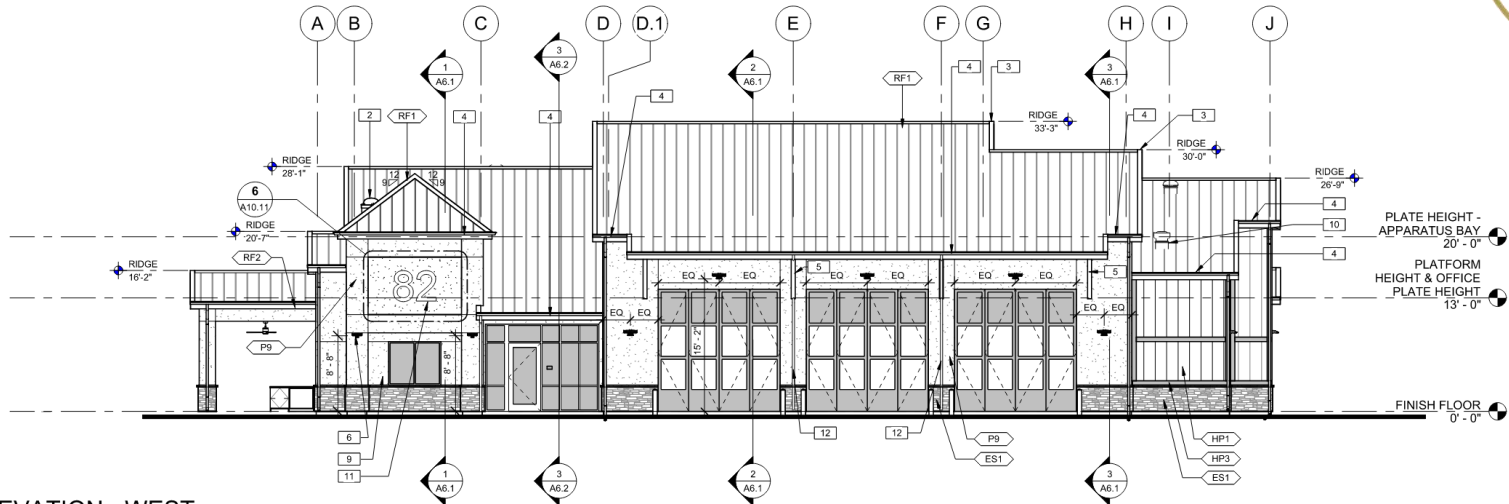
Location



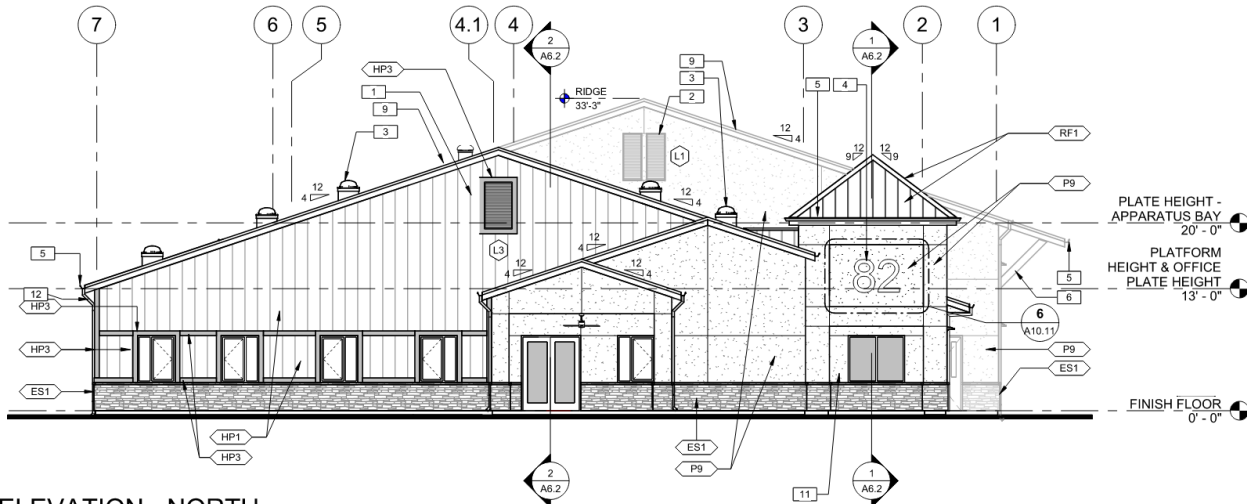
Area Plan



Exterior Elevations

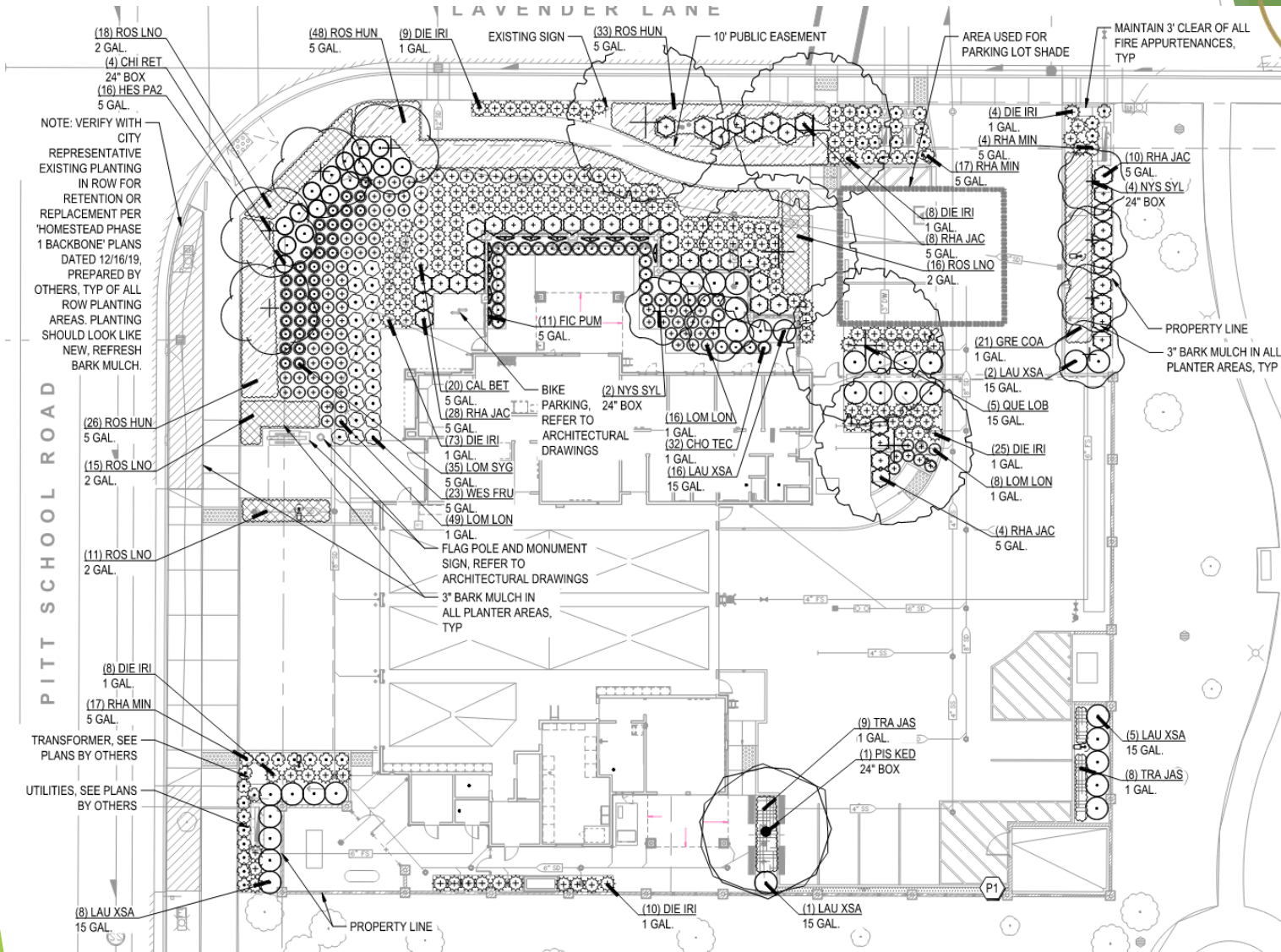
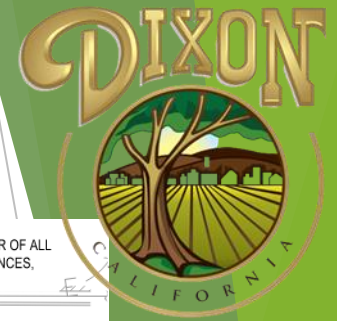


2 ELEVATION - WEST
1/8" = 1'-0"

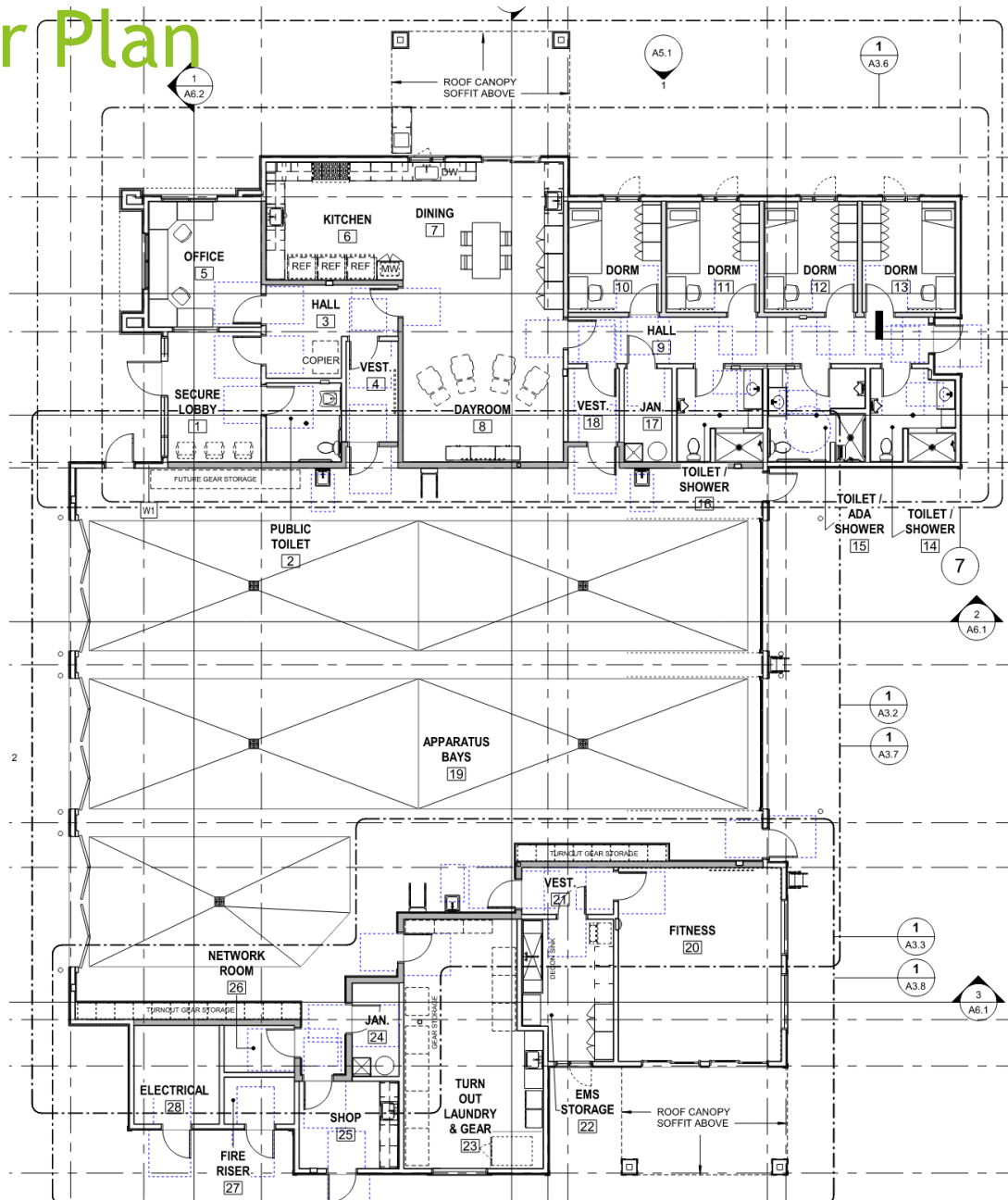


1 ELEVATION - NORTH
1/8" = 1'-0"

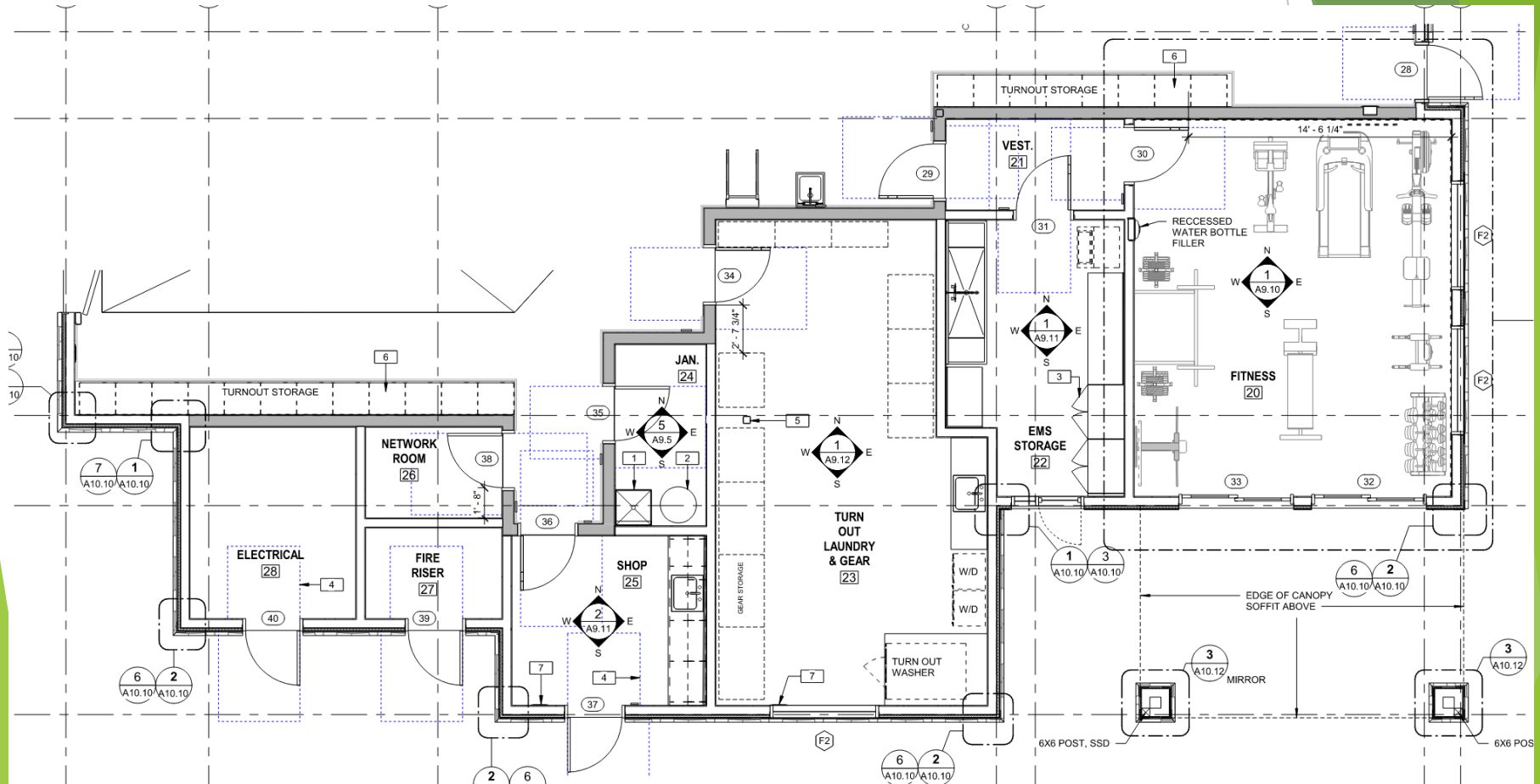
Landscape Plan



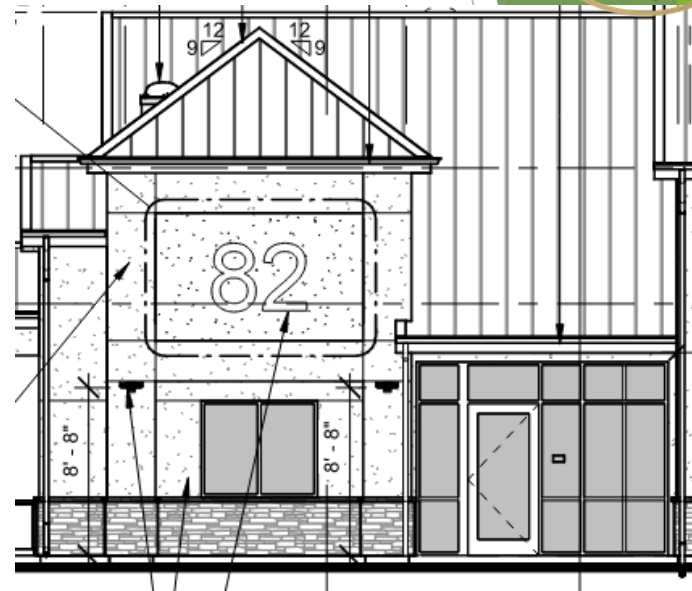
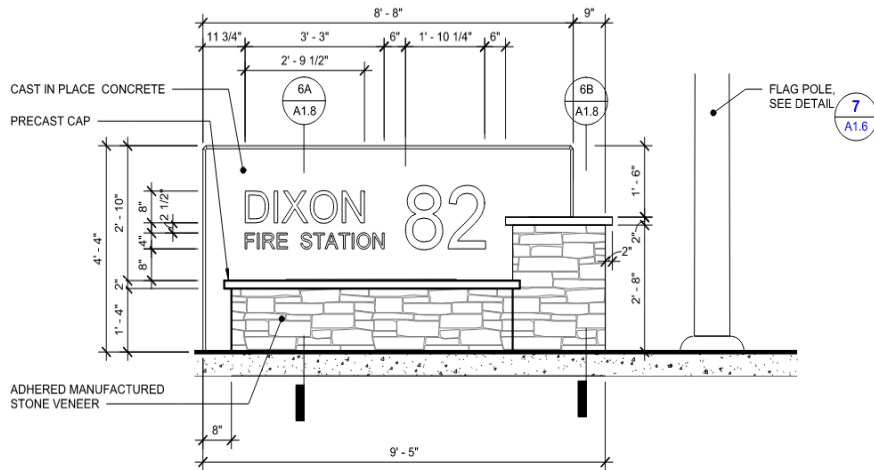
Floor Plan



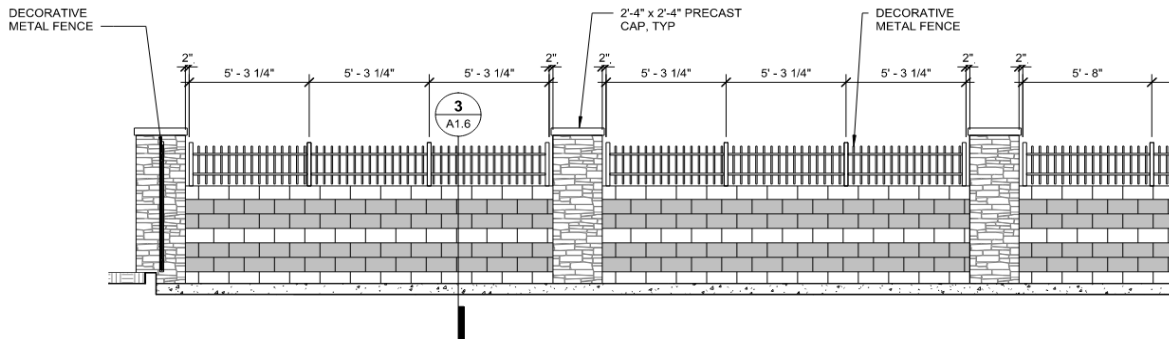
Floor Plan Fitness, Shop, Laundry



Details



2 MONUMENT SIGN ELEVATION - SOUTH
1/2" = 1'-0"



4 SITE ELEVATION
1/4" = 1'-0"



Aerial View From Intersection



Next steps

- Budget Funds and Request Authorization to Bid
- Evaluate Bids and Request Authorization to Awards and begin Construction





Questions?